

I ADJUSTMENT/SETTING

5. SERVICE MODE

5.3 Machine Adjustment

5.3.15 Beam Pitch Adjustment (Printer Adjustment)

(1) Functions

Adjust the beam pitches of LD1 to LD8 by changing the write clock.

(2) Usage

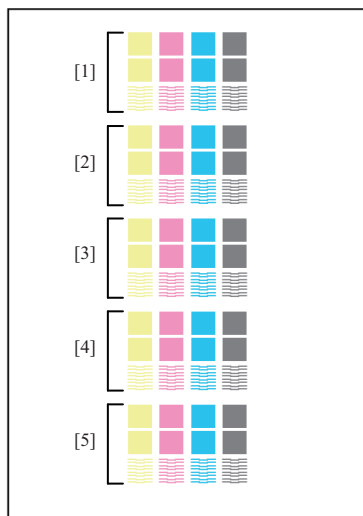
Perform this adjustment after replacing the write unit.

Note

- Be sure that the "I.5.3.9 Skew Initial Position Memory (Printer Adjustment - Writing Initial Pos. Memory)" and "I.5.3.11 Color Registration Auto.Adj. (Printer Adjustment)" have been adjusted in advance.
- Be sure to set the current value of the "I.5.3.16 Moire Adjustment (Printer Adjustment)" to 0 before conducting this adjustment.

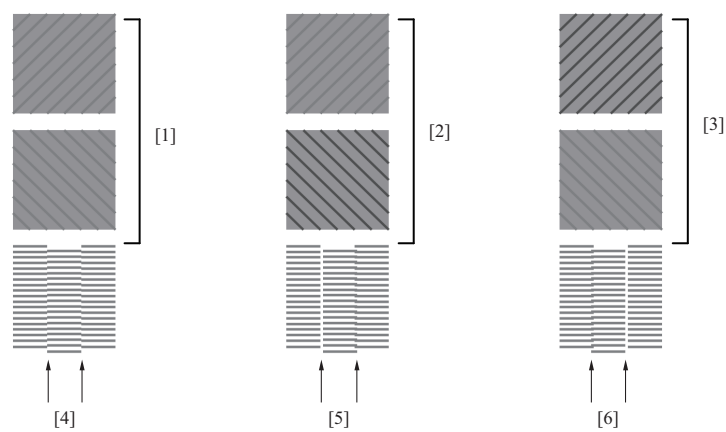
(3) Procedure

1. "Service Mode menu screen"
Press [01 Machine Adjustment].
2. "Machine Adjustment Menu screen"
Press [01 Printer Adjustment].
3. "Printer Adjustment Menu screen"
Press [14 Beam Pitch Adjustment].
4. "Beam Pitch Adjustment screen"
Confirm that the current value of [Y] is "0".
When it is other than 0, enter "0" through the numeric buttons and press [SET].
Set all the current values for each color to "0" in the same way and press [Print Mode].
5. "PRINT MODE screen"
Select A3 or 11 x 17 paper (105g/m² or less) and press the Start key.
6. Check the beam pitch misalignment on the 3rd column of the test chart.
The outputted charts shows in descending order the conditions with the values +10, +5, \pm 0, -5 and -10 to/from the current value of each colors.



[1]	Current +10	[2]	Current +5
[3]	Current	[4]	Current -5
[5]	Current -10	-	

7. When the moires on the top and bottom are even or there is no moire [1], or the white thin line and the black thin line on the left and right are even or there is no thin line [4]: No need to adjust.
When the moire on the bottom is strong [2] or when the white thin line appears on the left side and the black one on the right side [5]: Adjust in "+" direction.
When the moire on the top is strong [3] or when the black thin line appears on the left side and the white one on the right side [6]: Adjust in "-" direction.



[1]	The moires on the top and bottom are even or there is no moire	[2]	The moires on the bottom is strong
[3]	The moires on the top is strong	[4]	The white thin line and the black thin line on the left and right are even or there is no thin line
[5]	The white thin line appears on the left side and the black one on the right side	[6]	The black thin line appears on the left side and the white one on the right side

- 8. If there are any abnormalities, press [Exit PrintMode].
- 9. "Beam Pitch Adjustment screen"
Enter a value through the numeric buttons and press [Set].
 - Setting range: -100 to +100
- 10. Repeat the steps 4 to 9 until an appropriate value is obtained.